

*TWOMLEY*

**THE  
1987  
ANNUAL REPORT  
OF THE  
COMMERCIAL FISHERIES  
ENTRY COMMISSION**



**State of Alaska**



**COMMERCIAL FISHERIES ENTRY COMMISSION**

Commission

Bruce Twomley, Chairman  
Rich Listowski, Commissioner  
Phil Smith, Commissioner

Adjudications

David A. Ingram, Managing Hearing Officer

Administration and Data Processing

Roger Kolden, Manager

Licensing

Christine Kelly, Licensing Administrator

Research

Kurt Schelle, Manager

Office Location

Capital Office Park, 1255 West Eighth Street, Juneau, Alaska

Mailing Address

P.O. Box KB, Juneau, Alaska 99811

Telephone

(907) 586-3456

Kodiak Licensing Office

c/o Department of Fish and Game  
Mission and Kashervaroff Roads  
Kodiak, Alaska  
Telephone (907) 486-4791

Typist for Annual Report

Sandra Thomas

Cover Photo

AYK Commercial Fishing (Compliments of  
Alaska Department of Fish and Game)

## TABLE OF CONTENTS

	Page
INTRODUCTION.....	1
COMMISSION ORGANIZATION.....	4
ADJUDICATIONS	
Overview.....	5
Administrative Proceedings and Decisions.....	6
Investigations.....	8
Judicial Rulings and Appeals.....	10
LICENSING	
Licensing.....	13
Permit Transfer Activity.....	16
Field Office Services.....	16
RESEARCH	
Research.....	19
Hardship Ranking Systems.....	20
New Limitations.....	22
Permit Ownership Patterns.....	24
Operating Costs, Net Returns and Fleet Reductions.....	25
Alternative Limited Entry Programs.....	26
APPENDIX	
Table 2.....	28
Table 3.....	39

## INTRODUCTION

The Commercial Fisheries Entry Commission (CFEC) is an independent, quasi-judicial agency responsible for promoting the conservation and sustained yield management of Alaska's fisheries resources and the economic health and stability of commercial fishing in Alaska by regulating entry into the fisheries in the public interest. A Commission decision to limit entry in a fishery is governed by a balance of biological, economic, and equitable considerations, with permits in limited fisheries initially awarded to those with the greatest historical participation in, and economic dependence on, the fisheries.

Commission activities [all of which are mandated by law (AS 16.43.010-090)] include:

Establishing maximum numbers of entry permits for fisheries to be limited;

Implementing systems to rank eligible applicants according to the relative hardship they would suffer if excluded from future participation in a limited fishery, and establishing application periods for permanent permits in a limited fishery;

Processing entry permit applications and adjudicating claims not resolved in initial classification;

Issuing entry permits in limited fisheries and interim-use permits in unlimited fisheries;

Issuing licenses, as required by statute, for all vessels used to participate in the State's commercial fisheries;

Processing requests for emergency and permanent transfers of entry and interim-use permits, and compiling data on all such transfers;

Enforcing provisions of the Limited Entry Act by regulating permit transfer activities, conducting investigations, bringing administrative revocation actions, and supporting civil and criminal actions brought by the Attorney General and District Attorneys;

Monitoring unlimited fisheries to assess the rate of development, the effectiveness of existing management measures, and the economic viability for participating gear operators;

Monitoring long term effects of entry limitation;

Monitoring the economic performance of limited fisheries to determine the need for further fleet reductions;

Participating in the development of comprehensive fisheries economic data and research, and dissemination of same to policymakers and members of the public; and,

Working closely with other management agencies, including the Department of Fish and Game, the Board of Fisheries, the Department of Commerce, the Department of Public Safety (Division of Fish and Wildlife Protection), the North Pacific Fisheries Management Council, the National Marine Fisheries Service, and the International Pacific Halibut Commission to develop and coordinate fisheries policies.

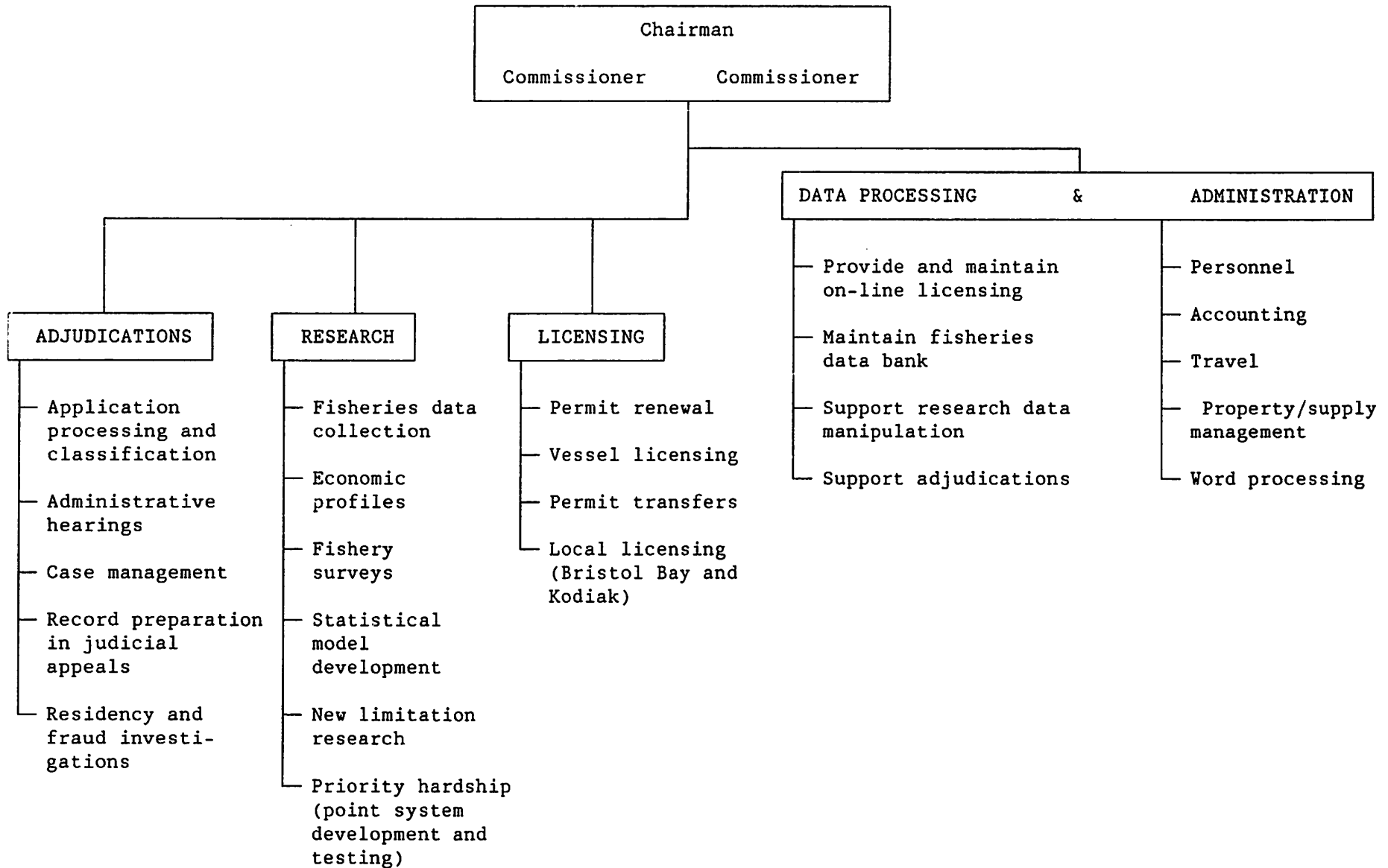
As noted herein, 1987 was a productive year for the Commission. In spite of significant reductions in budget and personnel commencing in July (FY 1988), the Commission proposed and adopted limitation in some six fisheries (the Prince William Sound herring spawn on kelp pound fishery, the Norton Sound gill net and beach seine herring fisheries, the Cape Romanzof herring gill net fishery, the Nelson Island herring gill net fishery, and the Nunivak Island herring gill net fishery). Additionally, applications for permanent permits were accepted for the three Southeast Alaska crab fisheries (limited in 1984), for the Southeast Alaska sablefish fisheries (limited in 1985), and for the Prince William Sound herring spawn on kelp pound fishery (limited early in 1987).

In addition to the above, considerable progress was made in converting the Commission's research data system from the small mini-computer (IBM 4361) to a network of personal computers. The loss of the computer resulted from forced budget reductions early in FY 1987.

FY 1988 funding for the Commission resulted in a decline in most areas, especially Data Processing and Research personnel. Although slight increases (above the Administration's request) were realized (using General Fund Program Receipt authority for the first time), the overall impact on the ability of the Commission to respond to data requests, to conduct research projects, and to analyze conditions in fisheries for possible limitation was devastating. Upon the receipt of petitions from over 500 Western Alaskans requesting limitation of Bering Sea herring fisheries, it was necessary for the Commission to seek additional program receipt authority from the Legislative Budget and Audit Committee prior to undertaking preliminary inquiries.

For the coming Fiscal Year, we anticipate no dramatic changes. The entire CFEC budget will most likely be funded with General Fund Program Receipts (anticipated to be in excess of \$4,000,000.00) generated by the activities of the Commission. Only slightly more than one-half of those receipts (less than \$2,300,000.00) will be allocated to fund the operations of the Commission. As stated in last year's Annual Report: ". . .the Commission will be forced to reorder its priorities, accomplishing (only, and at best, minimally) those tasks specifically required by legislation and mandated by the courts." Unfortunately, that prediction has proven to be all too accurate, and little change is anticipated for the foreseeable future.

COMMERCIAL FISHERIES ENTRY COMMISSION  
ORGANIZATION \*



\* The above organization chart presents a general view of the Commission's primary functions. It by no means lists all activities undertaken to meet the Commission's statutory responsibilities.

ADJUDICATIONS

Among its other duties as a quasi-judicial agency, the Commission conducts administrative hearings and issues decisions affecting entry permit applications, permit transfer requests, and fee arrearage cases as well as revocation and suspension actions. Generally, this adjudicative function is performed by the Commission's hearing officers and commissioners following determinations made by the paralegals and the transfer officer. It normally comes into play only when an individual requests and is granted a hearing to contest an adverse determination; however, a hearing must be held in all revocation and suspension actions unless waived by the affected party.

The Commission again had a very productive year, issuing more than 100 final decisions for the third year in a row. The number of final decisions would have been even greater had the commissioners not been distracted by the need to conduct several weeks of hearings on requested limitation of herring fisheries and to put several months of work into researching and studying those fisheries.



## Adjudications

---

### ADMINISTRATIVE PROCEEDINGS AND DECISIONS

The commissioners adjudicated a total of 104 cases during 1987. For the first time in five years, the number of cases decided did not exceed the previous year's output. Given the demands placed upon them by the herring fisheries, however, their 104 decisions kept pace with previous efforts. Of the 104 cases, 50 involved permit applications, 46 involved permit transfers, 1 was a fee arrearage case, 2 were permit revocations, 2 involved suspensions of those representing others before the Commission, and 3 were miscellaneous actions. They ruled on 42 requests for administrative review of hearing officer decisions, 6 requests for reconsideration of their own decisions, and 5 requests by Commission staff to issue show cause orders in revocation actions. They conducted 10 oral presentations, 2 involving permit applications, 5 involving permit transfers, and 3 involving revocations. At the end of the year, 173 cases were in various stages of the adjudication process leading up to the issuance of final decisions by the commissioners (down from 190 pending at the end of 1986).

The hearing officers conducted 81 hearings (26 entry permit applications, 47 permit transfers, 3 fee arrearages, 3 revocations, and 2 miscellaneous actions) and issued 86 final decisions, which

## Adjudications

---

represented an increase of 9% over the 79 decisions that they issued in 1986. Of those 86 decisions, 35 involved permit applications, 48 involved permit transfers, 2 involved arrearages, and 1 involved a miscellaneous action. They ruled on 103 hearing requests consisting of 34 permit applications, 51 permit transfers, 4 fee arrearages, and 14 miscellaneous actions. At the end of the year, 257 cases were in various stages leading up to the issuance of a decision by a hearing officer (down from 298 pending at the end of 1986).

## Adjudications

---

### INVESTIGATIONS

During 1987, the Commission made further progress in its continuing investigation of suspected false claims relating to permit applications, residency, permit transfers, leasing of permits, and other matters of mutual concern to the Commission, Public Safety's Division of Fish and Wildlife Protection, the Department of Law, the Department of Commerce and Economic Development, the Department of Revenue and other agencies. As in the past, various Commission personnel testified as expert witnesses for local district attorneys and the Department of Law in prosecutions throughout the state.

Although the Commission lost one application technician in mid-1987 due to budget cutbacks, the Adjudications staff still performed well in uncovering fraud. While the fines and fee arrearages collected were modest as compared to the previous year (\$2,500 in fines as opposed to \$33,100 in 1986 and \$3,335 in arrearages in comparison with \$7,320 in 1986), a major case was resolved that resulted in the revocation of two entry permits, a Bristol Bay salmon set gill net entry permit and a Bristol Bay salmon drift gill net entry permit, with a combined value of \$183,000 at the time they were revoked. Additionally, the staff spent a great deal of effort uncovering several operations believed to be illegally leasing permits and initiated

numerous fee arrearage investigations. Those efforts begun in 1987 have already brought in fines of \$9,500 thus far in 1988.

There were 15 revocation cases still active at the end of 1987. Several of those cases had been scheduled for hearing during the year but were delayed pending possible settlement based on the payment of substantial fines and suspensions of entry permits. Hearings were held on several cases late in the year, but decisions in those cases were not yet written by year's end.

JUDICIAL RULINGS AND APPEALS

Only four decisions were made by the Alaska Supreme Court involving the Commission and entry permits during 1987.

In Anderson v. Anderson, 736 P.2d 320 (Alaska 1987), the Court ruled that the Alaska Exemptions Act (AS 09.38.065) permits a parent with past due child support claims to execute against a limited entry permit held by the parent who owes the child support.

In Grunert v. State, Commercial Fisheries Entry Commission, 735 P.2d 118 (Alaska 1987), the Court upheld the Commission's denial of an application for an entry permit because the applicant had not fished as the holder of a gear license prior to the qualification date and therefore was not eligible to apply.

In Haynes v. State, Commercial Fisheries Entry Commission, 746 P.2d 892 (Alaska 1987), the Court declined to apply the Rutter decision retroactively to invalidate the point system for the Southeast Alaska roe herring purse seine fishery, in part because the Legislature had clarified its intent to avoid the application of Rutter to other fisheries.

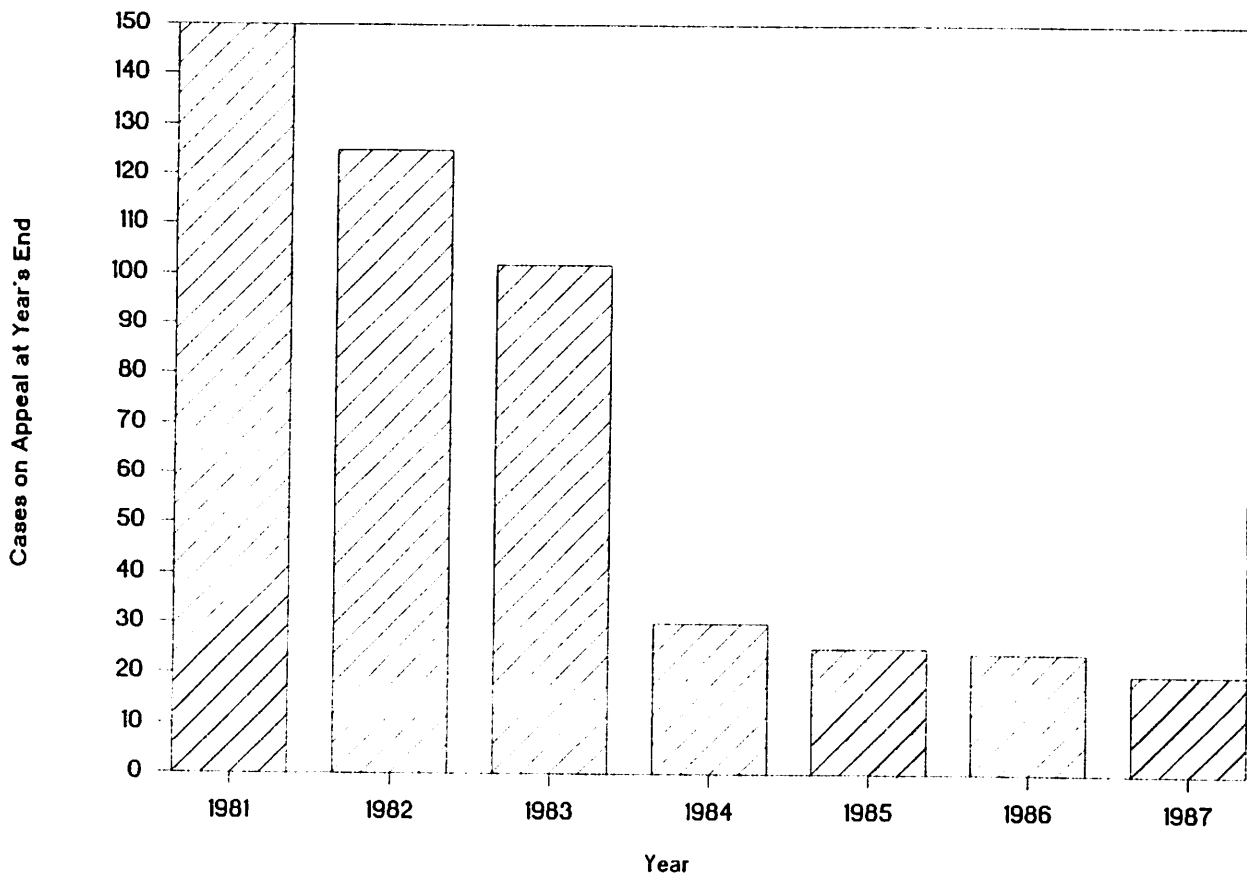
In Galeano v. State, CFEC, M.O.J. No. 375 (11/18/87), the Court upheld the Commission's application of its "clean break rule" and ruled that the applicant was not denied due process by changes in Commissioners or hearing officers or the length of time it took to process his application.

While few new decisions were handed down in 1987, the effects of earlier court actions continued to be felt throughout the year. Additional processing of applications for entry permits was required as a result of the following cases: Rutter v. State, 668 P.2d 1343 (Alaska 1983), which invalidated the salmon hand troll point system and brought about new regulations and a supplemental application period; Wassillie v. Simon, 3AN-75-206 Civil, which settled a class action lawsuit and allowed some Alaska Natives to submit late applications because they claimed that they were not provided application assistance that had been promised them; State v. Templeton, 598 P.2d 77 (Alaska 1979), CFEC v. Byayuk, 684 P.2d 114 (Alaska 1984), and Cashen v. State, 686 P.2d 1219 (Alaska 1984), which led to new regulations and new claims allowing income dependence claims arising out of some partnership situations; and Deubelbeiss v. CFEC, 689 P.2d 487 (Alaska 1984), which called for new regulations and allowed new claims regarding points for availability of alternative occupations based on an applicant's domicile. The full impact of these decisions has still to be felt by the Commission.

## Adjudications

---

At year's end, only 20 of the Commission's decisions were on appeal in the courts (down from 24 at the end of 1986), and, of those, only 8 were filed in 1987. As a result, the plateau that was reached in 1984, following a dramatic decline in the number of decisions appealed in former years, remained consistent throughout 1987. The following graph demonstrates the decline in appellate cases and the plateau that has existed in recent years:



LICENSING

During 1987, the Commission's licensing section continued operations at essentially the same level as in 1986, maintaining the field office in Kodiak year round and slightly reducing the duration of the seasonal licensing service provided during the Bristol Bay salmon fishery. At the same time, the number of permits and vessel licenses issued increased 8.5% over the previous year, rising from 44,499 to 48,264. The increases occurred in fisheries and/or areas not under limited entry, particularly abalone, miscellaneous saltwater finfish, black cod, roe herring, king crab and miscellaneous shellfish. (Refer to the following table for details.)

Change in Number of Permits Issued, 1986 to 1987

<u>Fishery Resource</u> *	<u>1986</u>	<u>1987</u>	<u>Percent Change</u>
Abalone	47	72	53.0 %
Black Cod	898	1235	37.5 %
Dungeness Crab	838	783	(- 6.6 % )
Halibut	5339	5574	4.4 %
Herring, Food/Bait	151	180	19.2 %
Herring, Roe	3174	4221	33.0 %
King Crab	453	650	43.5 %
Misc. Saltwater Finfish	2148	3462	61.2 %
Misc. Shellfish	97	199	105.0 %
Shrimp	818	888	8.6 %
Tanner Crab	657	712	8.4 %

\* Selected fisheries which were open-to-entry during the 1986 and 1987 seasons.



## Licensing

---

Permits issued or renewed for 1987 totalled 32,002, generating \$2,999,820 in revenues of which \$454,248 was transferred to the Fishermen's Fund program in accordance with AS 23.35.060. Revenues from the issuance of 16,262 vessel licenses totalled \$325,240. The net licensing revenue was \$2,870,812 for 1987, compared with \$2,584,229 for calendar year 1986.

The following is a breakdown of permits and vessel licenses issued, and revenues generated, for license year 1987:

Licensing

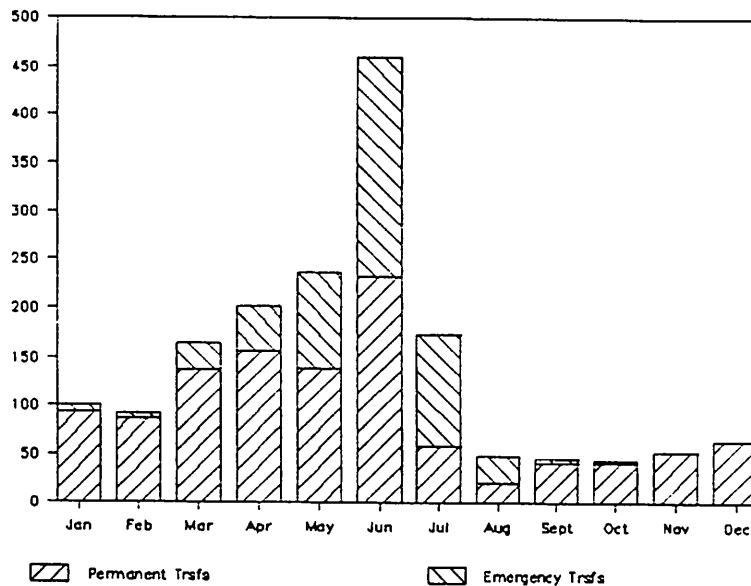
Limited Entry Permits <u>Not</u> Renewed.....	390	
Limited Entry Permits Renewed.....	12,108	
Interim Permits in Limited Entry Fisheries.....	728	
Interim Permits in Open-to-Entry Fisheries.....	19,142	
Special Harvest Area (Hatchery) Permits.....	22	
Educational Permits.....	2	
		-----
<b>TOTAL PAID PERMITS.....</b>	<b>32,002</b>	<b>\$2,999,820</b>
VESSELS LICENSED FOR 1987.....	16,262	\$ 325,240
		-----
<b>GROSS LICENSING REVENUE FOR 1987.....</b>	<b>48,264</b>	<b>\$3,325,060</b>
		-----
Less Fishermen's Fund Transfer of Fees.....		(\$ 454,248)
<b>NET LICENSING REVENUE FOR 1987.....</b>		<b>\$2,870,812</b>
LIMITED ENTRY PERMIT APPLICATION FEES.....	654	\$ 61,850
<b>Resident Permit Holders.....</b>	<b>14,391</b>	
<b>Nonresident Permit Holders.....</b>	<b>3,615</b>	
<b>TOTAL PERMIT HOLDERS.....</b>	<b>18,006</b>	
(This includes all individuals that hold permits in limited and/or unlimited fisheries.)		

Licensing

PERMIT TRANSFER ACTIVITY

The licensing section receives and reviews all requests for permanent or emergency transfers of permits. During 1987, approximately 650 requests for emergency transfer were received, of which 46 were denied upon initial review. A detailed table of permanent transfers by fishery is provided at the back of this report. However, a total of 1,121 permanent transfers were approved during the year. The following graph clearly depicts the seasonal nature of the transfer workload:

TRANSFER STATISTICS  
1987



FIELD OFFICE SERVICES

Since 1983, the Commission has maintained a year-round licensing office in Kodiak, and has provided licensing and transfer assistance in Dillingham and King Salmon during the peak of the Bristol Bay sockeye season. Beginning with the 1988 license year, a surcharge of \$10 per

license will be added to each renewal processed at a field office, with the expectation that sufficient revenues will be generated to enable the agency to continue providing these services, which may otherwise have to be eliminated due to budgetary constraints.

The field offices provide assistance with a variety of matters, including license renewals, replacement of lost licenses, permanent and emergency transfers of permits, applications for permanent limited entry permits, and general inquiries regarding CFEC regulations and issues.

The following chart shows the number of different people that renewed permits or vessel licenses at each of the field offices during 1987. These numbers do not indicate total office usage since many other types of assistance were also provided. Also shown are the numbers of permits and vessel licenses renewed at each field office, and the numbers of permit cards and vessel license receipts printed or embossed. (The number of cards and licenses printed or embossed is higher than the number renewed because changes of ownership or of vessel being fished require that new licenses be issued.)

Licensing

---

Field Office Usage

	<u>Kodiak</u>	<u>King Salmon</u> *	<u>Dillingham</u> *
PERMITS RENEWED			
Resident	2692	33	19
Nonresident	341	15	3
<b>TOTAL</b>	<b>3033</b>	<b>48</b>	<b>22</b>
CARDS EMBOSSSED			
Originals	3129	349	n/a
Duplicates	117	77	n/a
<b>TOTAL</b>	<b>3246</b>	<b>426</b>	
VESSELS LICENSED	1051	48	19
Receipts Printed	1129	122	n/a
PEOPLE PAYING FEES			
Resident	1243	33	18
Nonresident	238	15	3
<b>TOTAL</b>	<b>1481</b>	<b>48</b>	<b>21</b>

\* King Salmon was staffed 6/1 through 7/15 and Dillingham 6/8 through 7/9.

Research

In 1987, the Commission's research efforts were directed toward the most immediate demands faced by the agency. Several petitions for entry limitation were received, and considerable effort was devoted to carefully examining the fisheries in question. Ongoing projects designed to help monitor trends in limited fisheries, to estimate operating costs and rates of return in limited fisheries, to document and analyze changes occurring under the program, and to model the consequences of further fleet reductions were also continued. An effort was also initiated to examine other limited entry programs and to evaluate the performance and efficacy of alternative programs based upon "output rights" which have recently been implemented around the world. The following section provides a brief summary of 1987 activities.

Hardship Ranking Systems

Under Alaska's limited entry statutes, the Commission is directed to use a hardship ranking system to initially allocate permanent permits in a newly limited fishery. An allocation mechanism is necessary since typically the number of eligible applicants will exceed the maximum number of permits established for the fishery.

A hardship ranking system is designed to measure the relative hardship each applicant would suffer by exclusion from the fishery. By statute, these ranking systems are based upon the two broad concepts of past participation and economic dependence. The Commission is asked to consider, where reasonable for a fishery, criteria such as number of years of participation within a fishery, consistency of participation during each year, percentage of income derived from the fishery, availability of alternative occupations, and investment in vessel and gear. Other criteria may also be considered.

The Commission develops and evaluates alternative hardship ranking systems through a process called "priority testing". All available relevant information on each potential applicant is placed into a computer data base. Different measures for each criterion are then tested as are alternative "weighing" schemes. Each criterion is weighted relative to other criteria through the assignment of "points".

Hence, hardship ranking systems are commonly called point systems. While this development process is made as systematic as possible, it still must be characterized as a "search" process which requires both detailed data analyses and careful judgement. Commission proposals are then extensively reviewed through a public hearing process.

Once a fair point system is adopted, an application period is held and permits are issued in descending order to the highest ranking applicants until the maximum number has been reached. During 1987, the Commission completed and adopted hardship ranking system or point system regulations for the Northern Southeast inside sablefish longline fishery, the Southern Southeast inside sablefish longline fishery, the Southern Southeast inside sablefish pot fishery, and the Prince William Sound herring spawn on kelp pound fishery. The Commission also held application periods for permanent permits in these fisheries during 1987.

These applications are currently being evaluated and the Commission will begin to issue permanent permits in 1988. Initial allocation in the Prince William Sound herring spawn on kelp pound fishery will be easier than in the other fisheries, since the Commission was able to adopt a maximum number which is believed to be large enough to accommodate all previous participants. Most of the permanent permits in this fishery should be issued prior to the 1988 season.



## Research

---

### New Limitations

Each year, as Alaska's high valued unlimited fisheries face increasing fishing pressure, the Commission receives new petitions for limited entry regulations. Several petitions were received during 1987 and more are anticipated in 1988.

When a petition is received, the Commission must thoroughly examine the fishery to see if entry limitation is warranted. The Commission conducts background research designed to document historical developments and trends, to evaluate the existing regulatory framework, to determine whether or not a workable and beneficial program can be designed under existing statutes, to determine the best way to define the fisheries for limitation purposes in order to prevent post-limitation participation increases, to appraise the potential for jurisdictional conflicts and anticipatory "spillover" effects, and to analyze the type, scope, and magnitude of issues and problems which will need to be resolved in the initial allocation process. Based on this research, public testimony, and other relevant information the Commission decides whether or not to implement a limited entry program.

The Commission received petitions to limit several westward herring fisheries in 1987. The Commission proposed entry limitation for five of these fisheries and after a thorough review of each case and an extensive public hearing process decided to adopt maximum number regulations in the Norton Sound herring gill net, the Norton Sound herring beach seine, the Lower Yukon herring gill net, and the Nelson Island herring gill net fisheries during 1987. Maximum numbers for the fifth fishery, the Nunivak Island herring gill net fishery were adopted in early 1988. Hardship ranking systems for all of these newly limited fisheries will be developed during 1988.

Permit Ownership Patterns

In 1987, the Commission continued to monitor and evaluate trends in entry permit ownership patterns. Changes In The Distribution of Permit Ownership in Alaska's Limited Fisheries (CFEC Report Number 87-7), by E. Dinneford and B. Hart, represents the fifth edition of an extensive report.

This report provides detailed information on distributional changes in entry permit ownership over the 1975 through 1986 time period. It covers the 33 limited fisheries in which permanent permits had been issued by the end of 1986. It provides fishery specific and statewide data on transfer incidence, the initial geographical distribution of permit owners, changes due to transfers, changes due to migration, and the year-end 1986 geographic distribution of permit holders. Extensive information is also provided on the age distribution of permit holders, age differences between transferors and transfer recipients, the incidence of intra-family and business partner transfers, transfer acquisition methods, and transfer financing methods.

Operating Costs, Net Returns, and Fleet Reductions

Information on operating costs, net earnings, and rates of return are useful for a wide range of policy analyses. The data is especially needed to monitor the limited entry program, to evaluate the consequences of further fleet reductions, and to estimate optimum fleet sizes. CFEC has developed a methodology for utilizing survey data, combined with licensing records and catch records, to derive models which estimate operating costs and net returns as functions of information which is collected on an annual basis through administrative processes. These models can be used to provide ongoing estimates of economic returns in limited fisheries and are a valuable input into the simulation of alternative gear reduction scenarios.

The Commission was forced to curtail economic surveys in 1987 due to budget cuts. However, the staff continued to work with previous surveys and existing data to develop or extend fishery models. The report Net Return In The Cook Inlet Salmon Drift Gill Net Fishery, 1981 through 1983 was completed during the year. Work on other fisheries was continued.

Alternative Limited Entry Programs

In the past several years, a new method of effort management has been implemented in several locations around the world. These management programs attempt to control the overall harvest and to make commercial fishing more efficient by establishing and enforcing individual rights to harvest specified amounts of the overall quota. As such, this method represents a sharp contrast from traditional management strategies which must rely heavily on input controls and efficiency limiters to contain fishing power and effort in order to prevent overharvest of common property resources. The spirit of the new method is to have government establish and enforce the quasi harvest rights and then let fishermen, the fishing industry, and markets determine the most profitable harvesting, processing, and marketing strategies.

These new alternative programs have been given a variety of names such as individual share quotas, individual fisherman's quotas, and individual transferable quotas. The programs which have been implemented have varied considerably with respect to administrative details and imposed constraints. The feasibility of such programs appears to critically depend upon the cost of establishing and

adequately enforcing the quasi harvest rights, and the cost of adequately enforcing prohibitions on the dumping of bycatch and lower valued targeted catch.

As these programs have currently drawn considerable interest within Alaska, the Commission directed its research staff to monitor and collect as much detail as possible on these programs. The Commission hopes to maintain data and information on each program's legal bases, design, administrative procedures, enforcement methods, problems, successes, and failures. This effort should help us better understand both the requirements and potential pitfalls of such programs. The research staff will produce special reports on some of these programs in 1988.

**APPENDIX**

TABLE 2 -- PERMIT AND PERMIT TRANSFER STATISTICS, 1975-1987 \*

Fishery and Area	Year	Actual Transfer Information					Transfer Survey Information					
		Total Permanent Permits	Permanent Permits Held by Alaskans	Total Number of Transfers	Number of Permits Involved in Transfers	Change in Residency Due to Transfers	Permits with State Liens	Number of Non-mon. Transfers	Number of Monetary Transfers	Average Price Paid for Permits	Number of Financed Monetary Transfers	
Herring Purse Seine Southeastern	77	38	36	0	0	0	0	0	0	---	0	
	78	41	37	2	2	- 1	0	0	0	---	0	
	79	42	38	2	2	0	0	1	0	---	0	
	80	42	38	2	2	+ 1	1	2	0	---	0	
	81	41	38	1	1	0	4	1	0	---	0	
	82	42	39	4	4	0	4	2	2	***	2	
	83	42	37	3	3	- 2	4	1	2	***	1	
	84	42	37	1	1	0	5	0	1	***	1	
	85	43	38	2	2	0	7	0	2	***	2	
	86	44	39	3	3	0	8	1	2	***	2	
	87	44	39	3	3	0	9	1	2	***	2	
	Prince Wm Sound	77	85	77	3	3	- 1	0	0	1	***	1
		78	91	78	7	6	- 1	0	0	1	***	0
		79	92	80	16	13	+ 1	0	1	2	***	1
80		92	77	7	7	- 1	5	2	4	46,250	3	
81		92	76	4	4	0	8	2	2	***	2	
82		93	78	10	10	0	13	3	7	71,250	6	
83		97	83	2	2	+ 2	16	1	1	***	1	
84		100	86	16	15	+ 1	19	9	7	63,857	7	
85		102	86	16	14	- 1	23	4	12	66,375	5	
86		102	85	13	13	0	28	3	10	75,750	6	
87	103	84	6	6	0	29	2	4	96,250	1		
Cook Inlet	77	61	57	1	1	0	0	0	1	***	0	
	78	67	60	9	7	- 1	0	1	1	***	1	
	79	68	59	10	7	0	0	0	4	27,500	1	
	80	68	58	3	3	0	5	1	1	***	1	
	81	68	57	4	4	- 1	5	1	3	***	1	
	82	69	58	2	2	0	5	1	1	***	1	
	83	70	59	1	1	0	5	1	0	---	0	
	84	72	59	3	3	0	6	2	1	***	1	
	85	73	59	12	12	+ 1	6	2	10	16,700	0	
	86	73	57	20	19	- 2	9	7	13	31,362	4	
87	73	56	14	14	- 2	11	3	11	111,364	3		
Kodiak	84	5	5	0	0	0	0	0	0	---	0	
	85	42	39	6	6	0	2	2	4	36,250	2	
	86	42	39	9	9	+ 1	4	2	7	23,286	3	
	87	44	40	9	7	- 1	6	0	9	22,611	2	

\* Please read "Notes for Table" at end of table.



TABLE 2 -- PERMIT AND PERMIT TRANSFER STATISTICS, 1975-1987 \*

Fishery and Area	Year	Actual Transfer Information					Transfer Survey Information				
		Total Permanent Permits	Permanent Permits Held by Alaskans	Total Number of Transfers	Number of Permits Involved in Transfers	Change in Residency Due to Transfers	Permits with State Liens	Number of Non-mon. Transfers	Number of Monetary Transfers	Average Price Paid for Permits	Number of Financed Monetary Transfers
Herring Seing/Gill Net											
Kodiak	87	1	1	0	0	0	0	0	0	---	0
Herring Gill Net											
Southeastern	78	10	10	1	1	0	0	0	0	---	0
	79	39	35	2	2	0	1	0	0	---	0
	80	44	38	4	4	0	2	0	4	13,363	4
	81	45	39	4	4	+ 1	5	0	4	13,875	2
	82	59	47	6	6	- 1	8	1	5	27,500	5
	83	67	47	12	12	- 6	5	9	3	***	2
	84	82	62	11	11	+ 1	9	5	6	39,583	2
	85	87	61	16	16	- 5	8	4	12	45,000	4
	86	90	61	12	10	- 1	9	8	4	51,250	1
	87	91	60	15	14	0	13	3	12	48,542	6
Prince Wm Sound	82	24	22	4	4	+ 1	0	1	3	***	1
	83	24	23	4	4	+ 1	2	0	4	17,000	4
	84	24	22	5	5	0	6	1	4	24,000	4
	85	24	23	4	3	+ 1	8	1	3	***	2
	86	24	22	5	5	0	11	1	4	30,500	1
	87	24	22	1	1	0	10	1	0	---	0
Kodiak	84	8	8	1	1	0	0	0	1	***	1
	85	54	53	12	11	0	3	2	10	15,600	4
	86	57	57	12	12	+ 1	11	2	10	16,600	4
	87	59	59	9	8	0	13	3	6	15,250	3
Salmon Purse Seine											
Southeastern	75	398	198	51	51	- 4	0	8	15	10,633	12
	76	409	202	24	21	- 3	0	1	9	9,222	5
	77	411	196	53	50	- 6	0	6	21	16,667	14
	78	413	193	56	50	- 8	0	5	16	30,929	13
	79	413	189	38	36	- 2	1	3	12	39,917	10
	80	414	193	35	34	+ 3	12	12	15	39,600	9
	81	414	194	35	34	0	15	12	23	40,652	12
	82	414	186	31	31	- 6	23	10	21	40,286	11
	83	416	188	34	32	- 1	25	14	20	38,531	10
	84	417	186	55	52	- 1	28	17	38	40,884	18
	85	416	182	36	33	- 6	32	9	27	37,907	12
	86	416	185	26	23	+ 2	36	8	18	34,403	3
	87	416	183	36	33	+ 3	39	6	30	40,832	10

\* Please read "Notes for Table" at end of table.

APRIL 19, 1988

TABLE 2 -- PERMIT AND PERMIT TRANSFER STATISTICS, 1975-1987 \*

Fishery and Area	Year	----- Actual Transfer Information -----					----- Transfer Survey Information -----				
		Total Permanent Permits	Permanent Permits Held by Alaskans	Total Number of Transfers	Number of Permits Involved in Transfers	Change in Residency Due to Transfers	Permits with State Liens	Number of Non-mon. Transfers	Number of Monetary Transfers	Average Price Paid for Permits	Number of Financed Monetary Transfers
Salmon Purse Seine Prince Wm Sound	75	210	164	19	17	+ 2	0	0	7	8,000	5
	76	247	194	42	36	- 5	0	5	11	10,700	6
	77	255	198	28	24	- 3	0	1	6	29,800	5
	78	257	193	36	32	- 5	0	3	10	24,272	4
	79	258	192	47	41	- 3	5	3	13	33,846	5
	80	258	197	29	28	+ 1	15	12	14	40,154	6
	81	259	190	34	34	- 5	31	18	16	69,531	10
	82	259	188	26	26	+ 1	38	12	14	101,690	13
	83	259	187	29	28	- 1	49	12	17	142,384	14
	84	261	188	23	22	- 2	51	12	11	131,695	9
	85	261	191	27	25	+ 7	57	10	17	104,206	8
	86	262	190	26	24	+ 1	66	13	13	99,400	9
	87	262	191	36	35	+ 1	66	15	21	90,000	16
Cook Inlet	75	49	49	3	2	0	0	0	0	---	0
	76	63	62	7	6	- 1	0	1	2	***	2
	77	72	72	12	11	0	0	2	4	10,625	2
	78	74	74	10	9	0	0	2	5	40,000	4
	79	75	74	9	8	0	1	2	1	***	1
	80	75	73	12	12	- 1	4	4	7	82,786	3
	81	75	73	10	9	0	9	3	7	83,714	5
	82	77	76	11	11	0	14	6	5	84,267	5
	83	78	78	15	14	+ 1	20	7	8	90,000	7
	84	78	77	10	8	- 1	18	9	1	***	1
	85	80	79	5	5	0	22	1	4	58,375	3
	86	82	81	9	9	0	23	4	5	60,000	4
	87	82	81	16	15	0	27	5	11	60,455	6
Kodiak	75	334	242	22	22	+ 4	0	4	7	4,571	5
	76	358	262	42	40	- 1	0	6	13	9,736	5
	77	365	270	72	62	+ 3	0	13	19	17,611	7
	78	371	273	60	52	+ 3	0	11	9	47,611	9
	79	374	272	57	41	- 2	3	5	12	66,045	6
	80	375	275	35	34	+ 4	22	5	24	70,688	15
	81	375	280	37	36	+ 7	46	16	20	68,625	15
	82	376	284	43	42	+ 4	58	14	29	75,511	28
	83	377	289	47	47	+ 4	70	19	28	69,903	20
	84	378	286	29	29	- 2	79	12	17	61,265	7
	85	379	288	43	39	0	80	20	23	46,337	9
	86	380	294	52	46	+ 5	94	25	27	36,151	12
	87	381	293	61	53	0	103	23	38	44,128	13

30

\* Please read "Notes for Table" at end of table.  
APRIL 19, 1988

TABLE 2 -- PERMIT AND PERMIT TRANSFER STATISTICS, 1975-1987 \*

Fishery and Area	Year	----- Actual Transfer Information -----					----- Transfer Survey Information -----				
		Total Permanent Permits	Permanent Permits Held by Alaskans	Total Number of Transfers	Number of Permits Involved in Transfers	Change in Residency Due to Transfers	Permits with State Liens	Number of Non-mon. Transfers	Number of Monetary Transfers	Average Price Paid for Permits	Number of Financed Monetary Transfers
Salmon Purse Seine Chignik	75	85	64	4	4	0	0	1	1	***	1
	76	90	72	4	4	0	0	2	0	---	0
	77	90	73	6	5	+ 1	0	2	1	***	1
	78	90	76	3	3	0	0	1	0	---	0
	79	90	76	1	1	+ 1	0	0	0	---	0
	80	90	76	1	1	0	2	1	0	---	0
	81	90	74	5	4	- 1	5	2	3	***	3
	82	90	74	7	6	0	5	6	1	***	0
	83	90	74	4	4	0	9	2	2	***	1
	84	90	76	9	8	+ 1	13	5	4	322,500	3
	85	90	78	6	6	+ 1	15	3	3	***	2
	86	90	78	5	5	+ 1	15	3	2	***	1
	87	90	77	0	0	0	17	0	0	---	0
	Alaska Peninsula	75	108	95	3	3	0	0	0	0	---
76		112	99	6	5	0	0	3	0	---	0
77		113	100	15	13	0	0	4	1	***	0
78		115	104	12	12	+ 1	0	2	3	***	2
79		117	102	13	12	- 3	0	3	5	66,000	1
80		117	97	19	17	- 3	3	14	2	***	1
81		117	98	9	9	+ 1	7	7	2	***	2
82		118	99	5	5	0	6	3	2	***	0
83		118	98	22	19	- 2	7	16	6	195,000	5
84		118	98	8	8	+ 1	9	5	3	***	3
85		119	100	3	3	0	11	3	0	---	0
86	119	99	10	10	- 1	16	6	4	196,250	2	
87	119	96	10	10	- 2	18	6	4	145,000	2	
Salmon Beach Seine Kodiak	75	21	20	0	0	0	0	0	0	---	0
	76	23	22	2	2	0	0	0	0	---	0
	77	30	27	10	8	- 1	0	1	3	***	2
	78	33	30	16	14	0	0	4	3	***	1
	79	33	30	7	7	- 1	0	1	4	36,500	3
	80	34	31	9	9	- 1	0	1	4	42,625	2
	81	34	32	10	8	0	3	3	7	42,429	5
	82	34	32	4	4	0	2	2	2	***	2
	83	35	32	5	5	0	4	2	3	***	3
	84	35	32	3	3	0	5	1	2	***	1
	85	34	30	6	5	- 1	4	2	4	23,750	1
86	34	30	3	3	0	4	1	2	***	0	
87	33	31	7	7	0	7	2	5	25,000	3	

\* Please read "Notes for Table" at end of table.

TABLE 2 -- PERMIT AND PERMIT TRANSFER STATISTICS, 1975-1987 \*

Fishery and Area	Year	Actual Transfer Information					Transfer Survey Information				
		Total Permanent Permits	Permanent Permits Held by Alaskans	Total Number of Transfers	Number of Permits Involved in Transfers	Change in Residency Due to Transfers	Permits with State Liens	Number of Non-mon. Transfers	Number of Monetary Transfers	Average Price Paid for Permits	Number of Financed Monetary Transfers
Salmon Drift Gill Net											
Southeastern											
	75	431	293	94	89	+ 6	0	9	28	9,211	21
	76	449	313	59	48	+ 4	0	6	12	10,213	7
	77	460	323	71	68	+ 6	0	11	25	16,262	17
	78	463	329	81	67	+ 5	0	11	26	34,604	18
	79	464	324	72	60	- 6	9	8	19	41,763	14
	80	464	322	59	56	- 1	32	22	35	41,714	21
	81	464	319	66	61	- 1	49	25	40	43,920	30
	82	466	316	74	66	- 9	58	33	41	38,495	30
	83	467	322	50	45	0	70	13	37	34,508	23
	84	467	316	64	60	- 9	70	21	43	32,898	14
	85	468	321	61	59	+ 1	76	18	43	35,623	21
	86	468	327	71	65	+ 1	97	26	45	44,849	22
	87	468	328	52	48	- 2	104	18	34	55,632	16
Prince Wm Sound											
	75	494	366	36	33	+ 1	0	4	9	3,089	6
	76	514	390	70	64	+ 3	0	10	18	4,500	15
	77	524	393	83	71	- 2	0	8	30	13,750	20
	78	528	384	84	69	- 4	0	8	25	27,742	19
	79	531	384	68	62	+ 1	4	11	22	35,632	13
	80	531	392	54	51	+ 4	11	19	26	27,288	17
	81	531	398	74	73	+ 8	46	20	54	32,204	30
	82	531	384	78	72	-10	63	27	51	46,461	32
	83	533	396	54	53	+ 1	88	17	37	61,450	24
	84	534	393	57	52	- 6	107	22	35	53,157	18
	85	534	386	70	66	- 5	108	17	53	55,679	25
	86	536	384	57	53	- 2	128	11	46	62,006	23
	87	536	386	57	55	+ 5	141	12	45	62,147	21
Cook Inlet											
	75	453	291	30	30	+ 3	0	3	10	3,911	3
	76	514	342	76	73	+ 2	0	9	29	5,552	12
	77	539	359	87	79	- 4	0	13	28	9,643	14
	78	549	365	87	82	0	0	20	21	36,825	15
	79	554	371	86	75	+ 3	5	13	24	82,636	18
	80	554	373	76	72	+ 2	35	36	34	67,290	28
	81	554	375	76	73	- 1	73	27	48	67,213	39
	82	554	382	64	61	+ 4	81	27	37	57,866	27
	83	555	390	72	69	+ 4	103	21	51	69,720	39
	84	556	399	48	48	+ 2	115	13	35	66,306	20
	85	557	394	62	58	- 1	122	23	39	62,759	22
	86	559	394	71	68	0	152	21	50	63,902	27
	87	560	399	44	42	+ 4	160	18	26	86,542	11

\* Please read "Notes for Table" at end of table.

APRIL 19, 1988

TABLE 2 -- PERMIT AND PERMIT TRANSFER STATISTICS, 1975-1987 \*

Fishery and Area	Year	----- Actual Transfer Information -----					----- Transfer Survey Information -----				
		Total Permanent Permits	Permanent Permits Held by Alaskans	Total Number of Transfers	Number of Permits Involved in Transfers	Change in Residency Due to Transfers	Permits with State Liens	Number of Non-mon. Transfers	Number of Monetary Transfers	Average Price Paid for Permits	Number of Financed Monetary Transfers
Salmon Drift Gill Net											
Alaska Peninsula	75	152	109	4	4	0	0	1	0	---	0
	76	153	110	17	17	0	0	1	4	6,333	1
	77	154	108	31	26	- 1	0	7	7	10,286	5
	78	156	109	27	25	- 5	0	6	5	15,000	3
	79	156	107	32	26	- 1	0	7	4	60,625	3
	80	156	103	28	25	- 4	12	16	8	95,875	5
	81	156	101	23	23	- 3	14	13	10	123,500	7
	82	156	98	25	24	- 2	17	12	13	119,000	8
	83	156	96	26	23	- 1	17	17	9	145,778	5
	84	156	96	15	15	- 1	21	8	7	186,429	5
	85	156	92	24	22	- 3	27	9	15	159,153	11
	86	157	95	22	22	+ 2	34	9	13	197,000	7
	87	158	94	9	9	0	38	2	7	215,429	4
Bristol Bay											
	75	1,416	767	81	80	+ 9	0	16	19	1,166	9
	76	1,622	918	126	124	0	0	34	30	2,536	10
	77	1,663	947	213	196	-11	0	47	63	6,180	40
	78	1,700	973	235	211	-12	0	49	78	21,638	52
	79	1,717	971	225	197	-14	6	44	51	64,588	37
	80	1,717	967	169	162	0	81	68	79	89,032	59
	81	1,720	964	168	161	- 3	131	77	89	82,107	59
	82	1,724	961	183	179	-13	175	70	113	94,344	77
	83	1,727	990	160	155	+15	265	63	97	99,072	78
	84	1,729	970	153	146	-17	330	65	88	117,036	52
	85	1,738	978	138	130	0	353	49	89	114,647	41
	86	1,743	982	155	144	+ 1	394	58	97	121,120	54
	87	1,746	969	129	125	-10	401	51	78	130,265	40
Salmon Set Net											
Yakutat	75	147	131	9	8	+ 2	0	1	3	***	2
	76	156	140	15	15	+ 1	0	8	4	6,000	2
	77	158	141	16	15	- 1	0	2	5	7,000	1
	78	161	142	22	20	- 1	0	4	5	10,480	2
	79	164	143	13	12	- 3	0	3	3	***	1
	80	164	146	16	15	0	2	9	2	***	1
	81	164	146	23	20	0	5	11	11	26,682	6
	82	164	144	15	14	- 1	11	7	8	32,792	5
	83	164	144	18	17	- 1	11	14	4	27,250	2
	84	164	145	13	13	+ 1	10	9	4	23,750	2
	85	164	145	18	17	+ 1	14	9	9	25,862	7
	86	164	142	17	16	0	16	10	7	26,857	2
	87	164	139	17	16	- 2	13	12	5	27,200	0

33

\* Please read "Notes for Table" at end of table.

TABLE 2 -- PERMIT AND PERMIT TRANSFER STATISTICS, 1975-1987 \*

Fishery and Area	Year	----- Actual Transfer Information -----					----- Transfer Survey Information -----				
		Total Permanent Permits	Permanent Permits Held by Alaskans	Total Number of Transfers	Number of Permits Involved in Transfers	Change in Residency Due to Transfers	Permits with State Liens	Number of Non-mon. Transfers	Number of Monetary Transfers	Average Price Paid for Permits	Number of Financed Monetary Transfers
Salmon Set Net											
Prince Wm Sound	75	26	21	2	2	+ 2	0	0	0	---	0
	76	28	23	0	0	0	0	0	0	---	0
	77	28	21	2	2	- 1	0	0	0	---	0
	78	28	23	5	4	+ 1	0	0	2	***	1
	79	28	23	2	2	0	0	0	1	***	1
	80	28	24	3	3	+ 1	0	3	0	---	0
	81	29	24	2	2	0	1	0	2	***	1
	82	30	27	5	5	+ 2	2	0	5	19,400	5
	83	30	28	9	8	+ 1	1	3	6	24,167	5
	84	30	28	6	6	0	2	2	4	31,250	1
	85	30	28	5	5	0	5	1	4	32,375	2
	86	30	28	1	1	0	7	0	1	***	1
	87	30	27	6	5	- 1	6	2	4	29,625	0
Cook Inlet	75	652	608	47	46	0	0	7	9	2,250	6
	76	712	670	77	74	+ 9	0	14	14	1,778	7
	77	731	690	93	90	+ 3	0	12	29	4,821	15
	78	742	698	129	120	+ 1	0	23	46	9,824	15
	79	744	702	99	92	- 6	0	24	20	23,412	9
	80	744	697	89	87	+ 2	5	42	42	15,333	25
	81	744	685	110	103	- 7	18	50	59	15,322	31
	82	744	693	90	86	- 2	25	48	42	17,190	21
	83	743	683	103	101	-11	29	52	51	18,340	19
	84	743	670	89	86	-11	33	44	45	17,078	15
	85	744	670	92	90	- 7	33	41	51	16,312	10
	86	743	665	102	97	- 2	43	42	60	18,310	10
	87	743	662	100	97	- 3	41	33	67	26,633	13
Kodiak	75	139	103	22	22	+ 8	0	7	7	5,380	5
	76	176	133	37	34	- 2	0	4	10	3,900	2
	77	181	137	28	26	+ 1	0	5	7	6,600	4
	78	184	139	28	25	+ 2	0	9	6	19,800	4
	79	185	138	32	27	0	1	4	10	33,667	6
	80	186	138	34	33	+ 1	6	16	9	39,861	5
	81	186	141	25	25	+ 1	16	15	9	41,278	7
	82	186	138	28	28	- 3	17	16	12	39,817	7
	83	186	139	19	18	+ 1	17	13	6	57,033	5
	84	187	141	24	23	+ 1	23	13	11	57,200	5
	85	187	147	22	22	+ 3	23	15	7	56,357	3
	86	187	150	38	36	+ 3	27	19	19	61,792	8
	87	187	152	25	25	+ 3	27	17	8	60,122	3

34

\* Please read "Notes for Table" at end of table.

TABLE 2 -- PERMIT AND PERMIT TRANSFER STATISTICS, 1975-1987 \*

Fishery and Area	Year	Actual Transfer Information					Transfer Survey Information				
		Total Permanent Permits	Permanent Permits Held by Alaskans	Total Number of Transfers	Number of Permits Involved in Transfers	Change in Residency Due to Transfers	Permits with State Liens	Number of Non-mon. Transfers	Number of Monetary Transfers	Average Price Paid for Permits	Number of Financed Monetary Transfers
<b>Salmon Set Net</b>											
Alaska Peninsula	75	82	76	4	3	0	0	2	0	---	0
	76	105	98	5	5	0	0	2	3	***	1
	77	106	95	15	14	- 1	0	1	4	5,150	1
	78	108	99	14	13	0	0	3	2	***	0
	79	108	99	12	11	0	0	2	0	---	0
	80	109	98	17	14	- 2	0	7	5	14,500	3
	81	109	98	21	21	0	2	12	9	54,278	7
	82	109	96	19	19	- 1	4	8	11	54,636	6
	83	109	96	24	24	0	4	13	11	50,836	3
	84	109	95	18	18	- 1	5	9	9	45,332	2
	85	110	94	14	14	- 2	8	7	7	47,500	2
	86	113	93	11	10	- 4	11	4	7	56,357	4
	87	113	90	23	22	- 2	15	14	9	55,722	5
<b>Bristol Bay</b>											
	75	716	592	22	22	+ 2	0	9	0	---	0
	76	759	621	68	65	- 3	0	23	11	2,755	6
	77	824	669	76	74	- 6	0	21	19	2,695	4
	78	891	733	133	125	+ 4	0	39	27	8,507	9
	79	910	745	133	125	- 6	1	32	38	18,184	16
	80	913	728	113	111	-11	11	49	49	30,689	20
	81	914	714	112	106	-17	27	55	56	32,370	27
	82	916	705	118	115	-12	42	48	70	37,357	42
	83	929	711	97	94	- 4	57	48	49	41,680	27
	84	931	713	90	87	- 8	57	43	47	40,766	22
	85	931	715	98	96	0	66	50	48	35,974	22
	86	940	720	97	92	+ 5	79	35	62	33,247	18
	87	943	723	110	103	+ 1	82	46	64	34,453	20
<b>Salmon Power Troll</b>											
Southeastern	75	849	619	137	130	+23	0	11	52	5,303	27
	76	915	677	78	76	+ 2	0	14	29	5,065	18
	77	929	698	159	147	+15	0	11	64	8,831	25
	78	934	717	143	127	+13	0	13	78	15,457	39
	79	939	719	126	108	- 3	19	13	61	26,680	39
	80	939	704	97	94	-11	63	14	72	33,308	41
	81	939	713	95	92	+ 7	108	23	68	29,012	47
	82	940	718	86	83	- 3	130	15	71	21,630	44
	83	939	724	95	94	0	141	22	73	20,864	40
	84	940	722	83	81	-10	161	12	71	19,456	34
	85	942	731	83	82	+ 1	173	10	73	21,509	40
	86	942	731	88	85	+ 2	213	16	72	24,776	38
	87	942	751	75	72	+15	221	10	65	26,431	28

\* Please read "Notes for Table" at end of table.

TABLE 2 -- PERMIT AND PERMIT TRANSFER STATISTICS, 1975-1987 \*

Fishery and Area	Year	----- Actual Transfer Information -----					----- Transfer Survey Information -----					
		Total Permanent Permits	Permanent Permits Held by Alaskans	Total Number of Transfers	Number of Permits Involved in Transfers	Change in Residency Due to Transfers	Permits with State Liens	Number of Non-mon. Transfers	Number of Monetary Transfers	Average Price Paid for Permits	Number of Financed Monetary Transfers	
Salmon Hand Troll Southeastern	82	696	660	56	53	- 2	0	24	32	4,036	4	
	83	2,121	1,973	100	98	- 5	5	16	84	4,964	16	
	84	2,120	1,955	75	73	-11	9	7	68	4,732	11	
	85	1,986	1,841	110	105	- 9	11	21	89	5,109	7	
	86	1,965	1,819	124	120	- 4	14	16	108	5,252	5	
	87	1,931	1,775	109	106	- 7	12	16	93	5,551	8	
	Salmon Fishwheel Upper Yukon	76	80	80	2	2	0	0	0	0	---	0
77		107	107	2	2	0	0	0	0	---	0	
78		108	107	11	10	0	0	0	0	---	0	
79		114	114	6	6	0	0	1	3	***	1	
80		114	114	9	9	0	0	4	5	9,320	2	
81		123	123	16	16	0	0	2	14	10,893	3	
82		130	130	12	12	0	0	4	8	10,500	2	
83		130	129	19	19	- 1	0	12	7	11,643	4	
84		130	129	10	10	0	2	4	6	12,333	0	
85		132	132	9	8	+ 1	2	6	3	***	0	
86		133	132	8	8	0	2	6	2	***	0	
87		133	133	13	13	+ 1	2	4	9	9,089	0	
AYK Salmon Gill Net Upper Yukon		76	35	35	1	1	0	0	0	0	---	0
		77	44	44	1	1	0	0	0	1	***	0
	78	47	46	2	2	0	0	0	0	---	0	
	79	49	48	5	5	0	0	1	2	***	1	
	80	48	47	6	5	0	0	6	0	---	0	
	81	64	64	8	8	0	0	5	3	***	0	
	82	72	71	9	8	0	0	3	6	8,367	0	
	83	72	70	10	9	- 1	0	5	5	10,600	0	
	84	70	69	4	4	0	0	3	1	***	1	
	85	70	69	2	2	0	0	0	2	***	0	
	86	70	69	6	6	0	0	3	3	***	0	
	87	71	70	7	7	0	0	5	2	***	1	
	Kuskokwim	76	688	688	8	8	0	0	3	0	---	0
		77	761	761	18	18	0	0	11	0	---	0
78		766	765	50	47	0	0	26	6	6,100	2	
79		781	780	39	37	+ 1	1	17	10	6,420	4	
80		782	782	59	56	0	3	33	16	6,875	5	
81		785	784	49	47	- 1	4	34	14	8,339	3	
82		831	829	44	44	- 1	4	36	8	9,563	3	
83		831	828	64	63	0	4	55	9	10,222	2	
84		831	829	52	52	0	9	37	15	9,893	7	
85		831	829	45	43	0	12	39	6	10,083	1	
86		829	828	43	42	+ 1	16	28	15	10,133	4	
87		829	828	42	40	0	14	34	8	9,563	0	

36

\* Please read "Notes for Table" at end of table.

APRIL 19, 1988



TABLE 2 -- PERMIT AND PERMIT TRANSFER STATISTICS, 1975-1987 \*

		----- Actual Transfer Information -----					----- Transfer Survey Information -----				
Fishery and Area	Year	Total Permanent Permits	Permanent Permits Held by Alaskans	Total Number of Transfers	Number of Permits Involved in Transfers	Change in Residency Due to Transfers	Permits with State Liens	Number of Non-mon. Transfers	Number of Monetary Transfers	Average Price Paid for Permits	Number of Financed Monetary Transfers
AYK Salmon Gill Net											
Kotzebue	76	118	118	4	4	0	0	2	0	---	0
	77	175	175	2	2	0	0	0	0	---	0
	78	177	177	17	17	0	0	5	1	***	1
	79	180	180	18	18	0	0	3	8	5,200	2
	80	194	193	12	11	0	0	8	3	***	1
	81	211	208	18	18	- 1	0	10	8	7,813	0
	82	219	216	25	23	- 1	2	14	11	9,591	3
	83	219	216	17	17	- 1	5	5	12	13,083	4
	84	219	216	20	19	0	5	18	2	***	1
	85	219	216	13	13	0	11	10	3	***	1
	86	219	215	17	17	- 1	15	11	6	10,819	1
	87	219	213	15	15	0	14	11	4	9,500	1
Lower Yukon											
	76	678	677	6	5	0	0	4	0	---	0
	77	692	691	9	9	0	0	3	2	***	0
	78	695	691	26	25	- 1	0	14	5	6,700	3
	79	702	698	28	27	0	0	12	8	5,834	1
	80	703	700	45	44	0	1	29	9	9,289	2
	81	706	703	36	35	0	1	24	11	9,545	3
	82	707	703	40	38	0	2	28	12	18,250	5
	83	703	698	74	71	- 1	3	48	26	22,346	5
	84	704	699	41	41	0	9	24	17	28,441	8
	85	704	700	38	35	0	10	26	12	22,917	1
	86	703	696	36	36	- 1	15	25	11	22,455	3
	87	703	698	50	49	+ 2	15	38	12	20,688	2
Norton Sound											
	76	169	169	0	0	0	0	0	0	---	0
	77	176	174	2	2	- 1	0	0	0	---	0
	78	176	176	8	8	0	0	1	4	4,350	3
	79	177	175	11	11	- 2	1	2	5	6,300	1
	80	177	175	18	18	0	2	6	11	7,909	3
	81	195	194	17	16	0	3	7	10	9,450	4
	82	200	199	20	19	0	4	10	10	10,100	2
	83	201	199	22	20	- 1	8	15	7	11,429	2
	84	201	199	17	16	0	13	12	5	13,150	3
	85	202	200	13	13	0	12	7	6	12,167	2
	86	201	198	22	20	- 1	14	16	6	10,167	3
	87	201	199	15	15	0	13	11	4	9,750	1

\* Please read "Notes for Table" at end of table.

TABLE 2 -- PERMIT AND PERMIT TRANSFER STATISTICS, 1975-1987 \*

Fishery and Area	Year	Actual Transfer Information					Transfer Survey Information				
		Total Permanent Permits	Permanent Permits Held by Alaskans	Total Number of Transfers	Number of Permits Involved in Transfers	Change in Residency Due to Transfers	Permits with State Liens	Number of Non-mon. Transfers	Number of Monetary Transfers	Average Price Paid for Permits	Number of Financed Monetary Transfers
Totals	75	6,762	4,808	590	568	+58	0	83	167	5,694	102
	76	9,173	7,115	776	729	+ 6	0	152	199	5,455	99
	77	9,772	7,639	1,108	1,019	-10	0	181	341	10,013	178
	78	9,975	7,801	1,314	1,185	- 9	0	260	385	20,541	220
	79	10,104	7,868	1,209	1,071	-45	58	216	342	38,491	195
	80	10,132	7,856	1,060	1,017	-16	335	441	480	45,346	282
	81	10,204	7,905	1,092	1,047	-16	636	475	602	44,288	361
	82	11,030	8,653	1,144	1,100	-55	813	491	653	48,115	397
	83	12,488	10,027	1,211	1,169	- 9	1,044	536	675	48,573	371
	84	12,531	10,006	1,053	1,016	-72	1,229	444	609	49,800	279
	85	12,509	9,995	1,111	1,060	-23	1,344	421	690	46,879	272
	86	12,517	9,985	1,191	1,129	+ 7	1,611	440	751	48,662	282
	87	12,499	9,949	1,121	1,070	+ 3	1,687	424	697	50,794	241

\* Please read "Notes for Table" at end of table.  
Notes for Table:

APRIL 19, 1988

Total Permanent Permits -- The number of permanent permits may decrease from one year to the next because of revocations.

Permanent Permits Held by Alaskans -- Residency figures were calculated using the permit holder address from 1975-1978. After 1978 permit holders were required to declare their residency status on the renewal form and residency figures were taken from those declarations. These numbers may differ somewhat from those reported in "Changes in the Distribution of Permit Ownership in Alaska's Limited Fisheries" published by CFEC. In that report all persons who declared Alaska residency status but had out-of-state addresses are counted as non-residents. Numbers shown in this annual report may differ from those in previous annual reports due to residency status changes resulting from residency investigations. Permits held by the Dept. of Commerce or C.F.A.B. are counted as resident permits.

Total Number of Transfers -- Transfers reported here include forclosures by the Dept. of Commerce or by C.F.A.B.

Change in Residency Due to Transfers -- These figures may differ from figures reported in previous annual reports due to residency status changes resulting from residency investigations.

Permits with State Liens -- These are permits which have been financed by the Dept. of Commerce or by CFAB or which have been used as collateral against a commercial fishing loan from one of these agencies.

Transfer Survey Information -- These surveys were voluntary until January 1, 1980. Many transfers occurred without completion of a survey form during the years 1975-1979. A few surveys are missing for 1980 and 1981.

Non-monetary/Monetary Transfers -- For the years 1980-1985 any transfer survey with a sale price greater than \$500 was counted as a monetary transfer. All other transfers were counted as non-monetary transfers. For the years 1975-1979 the number of monetary transfers reported here is the number of transfer surveys which were used to compute the average price of permits for use by the Dept. of Commerce and CFAB in their loan programs. These surveys were selected using exclusionary criteria different from the \$500 minimum.

Average Price Paid for Permits -- These figures are the average of the sale price taken from all surveys counted as monetary transfers. For the years 1980-1985 they may vary slightly from the average prices used by the Dept. of Commerce and CFAB which are based on exclusionary criteria different from the \$500 minimum used in this report. A "---" indicates that there were no monetary transfers for this fishery. A "\*\*\*" indicates confidential information because fewer than four surveys exist.

TABLE 3 -- LOANS APPROVED BY THE DEPT. OF COMMERCE AND ECONOMIC DEVELOPMENT FOR THE PURCHASE OF ENTRY PERMITS

BY ELECTION DISTRICT, 1987

House Election District	-- Permit Only --		--Permit-Vessel--		----- Total -----	
	No.	Amount	No.	Amount	No.	Amount
1 Ketchikan-Wrangell-Petersburg	14	529,720	1	60,075	15	589,795
2 Inside Passage	9	624,034	0	0	9	624,034
3 Baranof-Chichagof	7	242,469	0	0	7	242,469
4 Juneau	9	587,523	0	0	9	587,523
5 Kenai-Cook Inlet	26	1,964,902	2	186,000	28	2,150,902
6 Prince William Sound	19	1,224,649	1	61,635	20	1,286,284
7-15 Anchorage	14	1,060,552	1	100,000	15	1,160,552
16 Matanuska-Susitna	6	573,259	1	82,000	7	655,259
17 Interior Highways	0	0	0	0	0	0
18-21 Fairbanks	4	181,750	0	0	4	181,750
22 North Slope-Kotzebue	1	9,737	0	0	1	9,737
23 Norton Sound	0	0	0	0	0	0
24 Interior Rivers	0	0	0	0	0	0
25 Lower Kuskokwim	0	0	0	0	0	0
26 Bristol Bay-Aleutian Islands	6	306,161	0	0	6	306,161
27 Kodiak-East Alaska Peninsula	8	375,876	0	0	8	375,876
1987 Total	123	7,680,632	6	489,710	129	8,170,342

BY CALENDAR YEAR 1972-1987

Calendar Year	-- Permit Only --		Permit-Vessel		----- Total -----	
	No.	Amount	No.	Amount	No.	Amount
1987	123	7,680,632	6	489,710	129	8,170,342
1986	161	10,153,268	10	702,337	171	10,855,605
1985	159	9,682,703	22	1,509,168	181	11,191,871
1984	155	9,366,311	7	471,050	162	9,837,361
1983	147	7,697,720	7	411,465	154	8,109,185
1982	194	9,300,897	2	134,473	196	9,435,370
1981	223	10,222,651	13	946,591	236	11,169,242
1980	93	4,145,533	26	1,939,951	119	6,085,484
1972-79	82	3,083,775	63	4,706,533	145	7,790,308
Total, 1972-1987	1,337	71,333,490	156	11,311,278	1,493	82,644,768

TABLE 3 (cont.) -- LOANS MADE BY THE DEPT. OF COMMERCE AND ECONOMIC DEVELOPMENT FOR THE PURCHASE OF ENTRY PERMITS

BY ELECTION DISTRICT FROM 7-1-82 TO 12-31-87 \*

House Election District -----	-- Permit Only --		--Permit-Vessel--		----- Total -----	
	No.	Amount	No.	Amount	No.	Amount
-----	---	-----	---	-----	---	-----
01 Ketchikan-Wrangell-Petersburg	97	\$4,592,242	5	\$289,025	102	\$4,881,267
02 Inside Passage	82	\$3,212,199	15	\$998,498	97	\$4,210,697
03 Baranof-Chichagof	53	\$1,174,360	6	\$229,979	59	\$1,404,339
04 Juneau	47	\$2,497,601	3	\$181,080	50	\$2,678,681
05 Kenai-Cook Inlet	164	\$11,441,805	9	\$687,901	173	\$12,129,706
06 Prince William Sound	71	\$4,729,254	7	\$522,527	78	\$5,251,781
07-15 Anchorage	115	\$7,830,220	1	\$100,000	116	\$7,930,220
16 Matanuska-Susitna	20	\$1,640,114	1	\$82,000	21	\$1,722,114
17 Interior Highways	6	\$360,033	0	\$0	6	\$360,033
18-21 Fairbanks	14	\$592,130	1	\$92,893	15	\$685,023
22 North Slope-Kotzebue	4	\$127,238	0	\$0	4	\$127,238
23 Norton Sound	3	\$135,729	0	\$0	3	\$135,729
24 Interior Rivers	4	\$159,264	0	\$0	4	\$159,264
25 Lower Kuskokwim	12	\$768,504	0	\$0	12	\$768,504
26 Bristol Bay-Aleut Isles	44	\$3,570,639	2	\$183,000	46	\$3,753,639
27 Kodiak-E Alaska Pen	79	\$5,138,132	4	\$351,300	83	\$5,489,432
===	=====	==	=====	===	=====	
	815	\$47,969,464	54	\$3,718,203	869	\$51,687,667

BY ELECTION DISTRICT FROM 1-1-72 TO 6-30-82 \*\*

House Election District -----	-- Permit Only --		--Permit-Vessel--		----- Total -----	
	No.	Amount	No.	Amount	No.	Amount
-----	---	-----	---	-----	---	-----
1 Ketchikan-Prince of Wales	35	1,095,228	8	456,350	43	1,551,578
2 Wrangell-Petersburg	40	1,455,646	12	1,081,983	52	2,537,629
3 Sitka	40	1,259,203	4	155,030	44	1,414,233
4 Juneau-Lynn Canal	59	2,219,870	23	1,414,937	82	3,634,807
5 Cordova-Valdez-Seward	34	1,474,816	9	628,750	43	2,103,566
6 Palmer	15	700,921	1	160,000	16	860,921
7-12 Anchorage	93	4,492,966	8	606,200	101	5,099,166
13 Kenai-Cook Inlet	96	5,175,152	19	1,400,725	115	6,575,877
14 Kodiak	51	2,712,120	6	609,900	57	3,322,020
15 Aleutian Chain	8	589,500	4	363,000	12	952,500
16 Bristol Bay	28	1,373,829	7	661,200	35	2,035,029
17-19 Bethel/Wade Hampton/Yukon-Tanana	10	454,177	0	0	10	454,177
20 Fairbanks	9	334,100	1	55,000	10	389,100
21 Barrow-Kobuk	1	5,625	0	0	1	5,625
22 Nome	3	20,873	0	0	3	20,873
	---	-----	---	-----	---	-----
Total	522	23,364,026	102	7,593,075	624	30,957,101

\* Based on the 27 election districts created by the 1980 reapportionment effective 7-1-82.

\*\* Based on the 22 election districts created by the 1970 reapportionment.